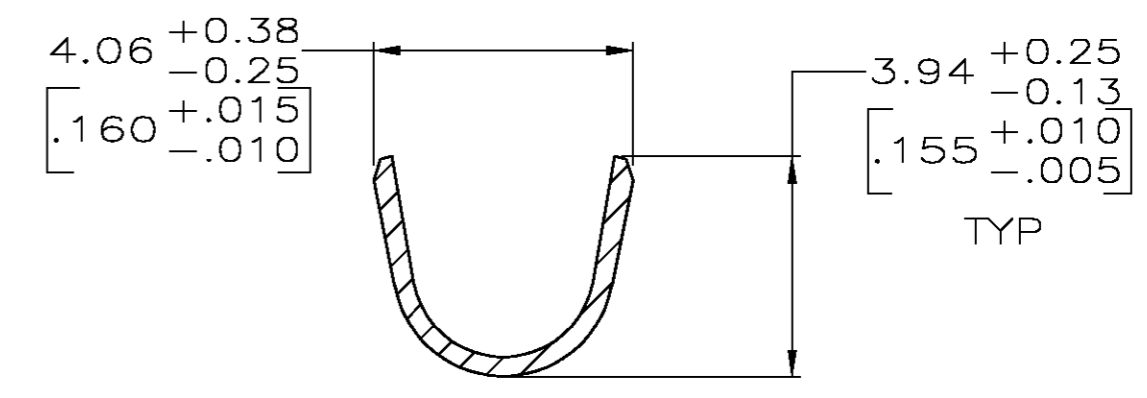
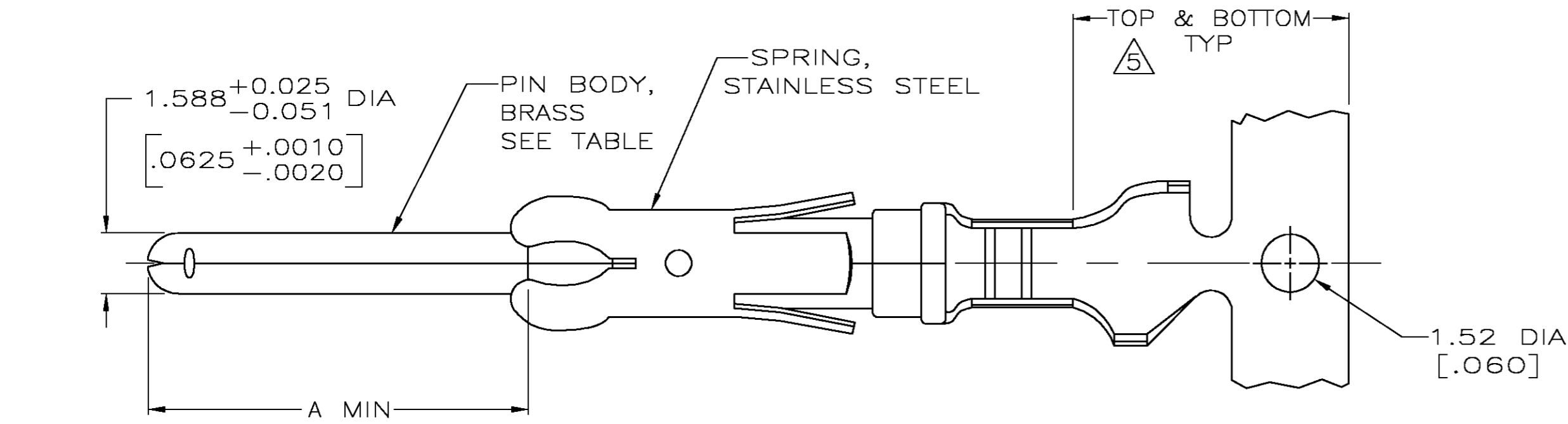
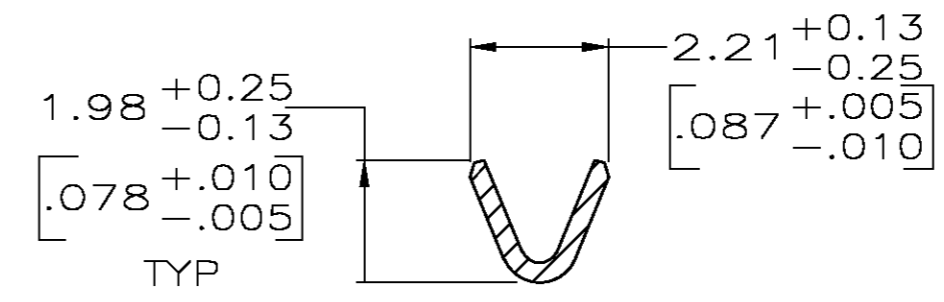
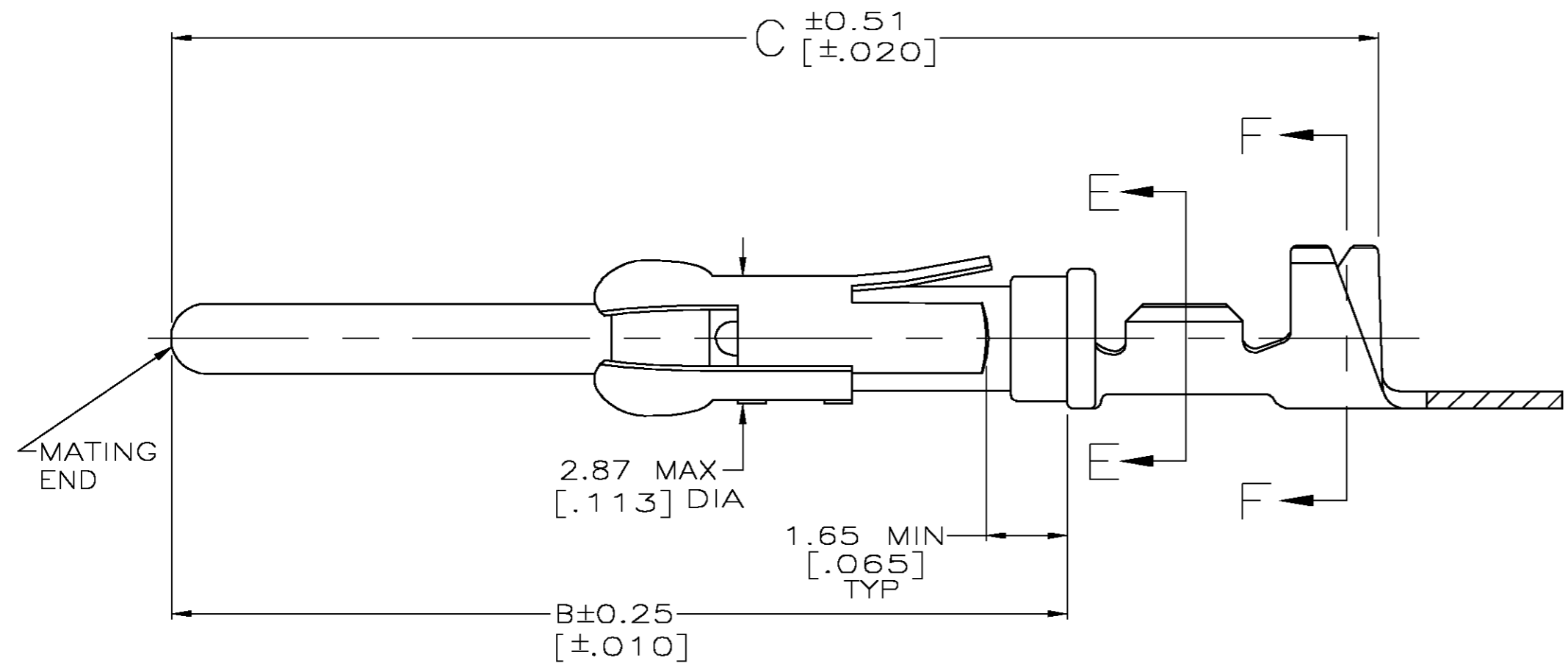


THIS DRAWING IS UNPUBLISHED. RELEASED FOR PUBLICATION
 © COPYRIGHT BY TYCO ELECTRONICS CORPORATION. ALL RIGHTS RESERVED.

LOC	DIST	REVISIONS			
P	LTR	DESCRIPTION	DATE	DWN	APVD
FT	0	V	REVISED PER 0G3B-0956-04	11/19/04	SS GS



SECTION F-F



SECTION E-E

- ① REVERSE REELED FOR MINI-APPLICATOR.
- ② 0.76 μ m [.000030] MIN GOLD PER MIL-G-45204 ON MATING END FOR A LENGTH OF 5.08 [.200] MIN WITH GOLD FLASH ON THE REMAINDER, OVER 1.27 μ m [.000050] MIN NICKEL PER QQ-N-290.
- ③ 0.76 μ m [.000030] MIN GOLD PER MIL-G-45204 IN MATING END FOR A LENGTH OF 5.08 [.200] MIN WITH A UNIFORM GRADIENT TO 0.25 μ m [.000010] MIN GOLD PER MIL-G-45204 ON THE REMAINDER, OVER 1.27 μ m [.000050] MIN NICKEL PER QQ-N-290.
- ④ 1.27 μ m [.000050] MIN TIN-LEAD PER MIL-T-10727 OVER 1.27 μ m [.000050] MIN NICKEL PER QQ-N-290.
- ⑤ GOLD PLATING NEED NOT APPEAR IN THIS AREA.
- 6. WIRE RANGE 24-20 AWG.
- 7. INSULATION RANGE 1.52 [.060]-3.05 [.120] DIA.
- ⑧ 0.38 μ m [.000015] MIN GOLD PER MIL-G-45204 ON MATING END FOR A LENGTH OF 5.08 [.200] MIN, 1.27 μ m [.000050] MIN TIN-LEAD PER MIL-T-10727 FOR A LENGTH OF 5.69 [.224] MIN ON OPPOSITE END, BOTH OVER 1.27 μ m [.000050] MIN NICKEL PER QQ-N-290 ON ENTIRE CONTACT.
- ⑨ 1.27 μ m [.000050] MIN TIN PER MIL-T-10727 OVER 1.27 μ m [.000050] MIN NICKEL PER QQ-N-290.

	27.10 [1.067]	20.24 [.797]	9.91 [.390]	STANDARD	⑨	66566-7	1-66564-3
	27.10 [1.067]	20.24 [.797]	9.91 [.390]	①	⑨	66566-7	1-66564-2
OBSOLETE	27.10 [1.067]	20.24 [.797]	9.91 [.390]	①	⑧	66566-6	1-66564-1
OBSOLETE	30.78 [1.212]	23.85 [.939]	13.59 [.535]	①	④	66566-5	1-66564-0
	27.10 [1.067]	20.24 [.797]	9.91 [.390]	①	②	66566-4	66564-8
	27.10 [1.067]	20.24 [.797]	9.91 [.390]	①	④	66566-2	66564-6
	27.10 [1.067]	20.24 [.797]	9.91 [.390]	STANDARD	④	66566-2	66564-2
OBSOLETE	27.10 [1.067]	20.24 [.797]	9.91 [.390]	STANDARD	③	66566-1	66564-1
	C	B	A	REELING	PIN BODY FINISH	LOOSE PIECE REF	PART NO

THIS DRAWING IS A CONTROLLED DOCUMENT.

DWN	R.SHIREY	7-22-91
CHK	R.STONE	8-15-91
APVD	J.WESTMAN	6-19-91

TOLERANCES UNLESS OTHERWISE SPECIFIED:
 0 PLC ± -
 1 PLC ± -
 2 PLC ± 0.13 [.005]
 3 PLC ± -
 4 PLC ± -
 ANGLES ± -
 FINISH SEE TABLE

THIS DRAWING IS A CONTROLLED DOCUMENT.

NAME: PIN ASSEMBLY, .062, TYPE III+

SIZE: A2 CAGE CODE: 00779 DRAWING NO: C=66564

SCALE: 8:1 SHEET: 1 OF 1 REV: V